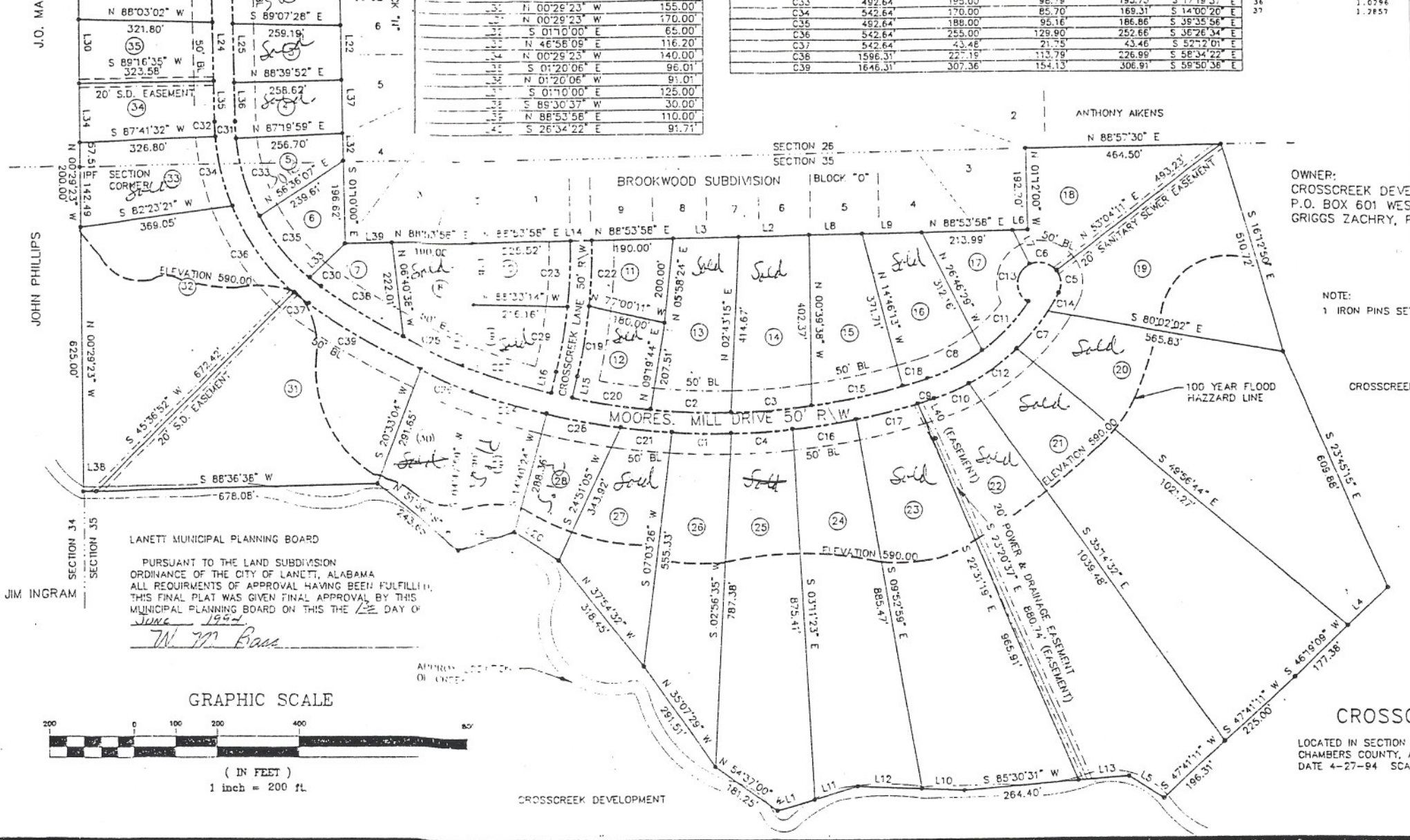


C33	492.64	199.00
C34	542.64	170.00
C35	492.64	188.00
C36	542.64	255.00
C37	542.64	23.48
C38	1596.31	23.19
C39	1646.31	307.36

C34	492.64	199.00	85.70	169.31	S 14°00'20" E
C35	492.64	188.00	95.16	186.86	S 38°35'56" E
C36	542.64	255.00	129.90	252.86	S 36°26'34" E
C37	542.64	23.48	21.75	43.46	S 52°2'01" E
C38	1596.31	23.19	113.79	226.99	S 58°34'22" E
C39	1646.31	307.36	154.13	306.91	S 59°50'36" E



OWNER:  
CROSSCREEK DEVELOPMENT  
P.O. BOX 601 WEST  
GRIGGS ZACHRY, P...

NOTE:  
1 IRON PINS SET

CROSSCREEK

CROSSC  
LOCATED IN SECTION 2  
CHAMBERS COUNTY, AL  
DATE 4-27-94 SCAL

LANETT MUNICIPAL PLANNING BOARD  
PURSUANT TO THE LAND SUBDIVISION  
ORDINANCE OF THE CITY OF LANETT, ALABAMA  
ALL REQUIREMENTS OF APPROVAL HAVING BEEN FULFILLED,  
THIS FINAL PLAT WAS GIVEN FINAL APPROVAL BY THIS  
MUNICIPAL PLANNING BOARD ON THIS THE 13 DAY OF  
JUNE 1994  
*W. M. Bass*

GRAPHIC SCALE



( IN FEET )  
1 inch = 200 ft.

ATLANTA LINE (404) 522-4682  
FAX LINE (404) 632-3282

Crawford & Associates, Inc.  
ENGINEERING, LAND SURVEYING & LAND PLANNING

105 CORPORATE DRIVE  
CARROLLTON, GA 30117